

# TAX MAP 17-0797

Plot Date: August 13, 2007

**Legend**

- Parcel Lines
- Creek Parcel Lines
- City Limit Lines
- ROW Lines
- School Tax Exempt
- Parcels Inside Landlot
- Parcels Outside Landlot
- Cobb County Parcels
- Unidentified Parcels

Reference Area:

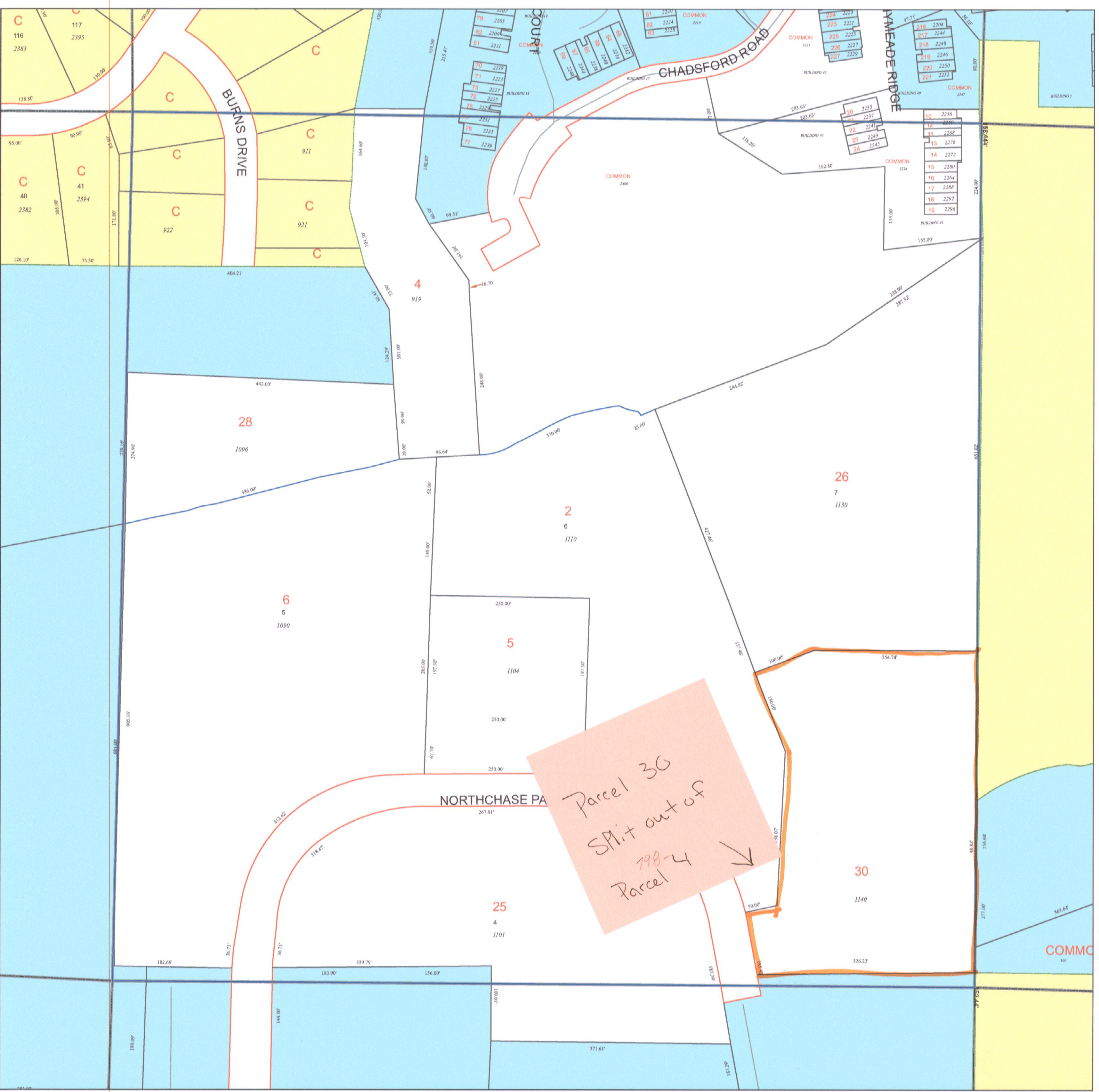
17-0789	17-0796	17-0860
17-0783	17-0797	17-0859
17-0787	17-0798	17-0858

N

1 = 100 Feet

**DISCLAIMER NOTE:** This map is prepared for the inventory of real property found within this jurisdiction and is compiled from aerial photography, recorded deeds, plats, and other imagery, data and public records. Users of this map are hereby notified that the aforementioned primary public information sources should be consulted for verification of the information contained on this map. This jurisdiction, and the mapping companies involved in preparing it, assume no legal responsibilities for the information contained on this map.

Coordinate System based on Georgia State Plane System.  
West Zone - NAD83



GIS Department  
205 Lawrence Street - Marietta, Georgia 30060  
[www.mariettaga.gov](http://www.mariettaga.gov)