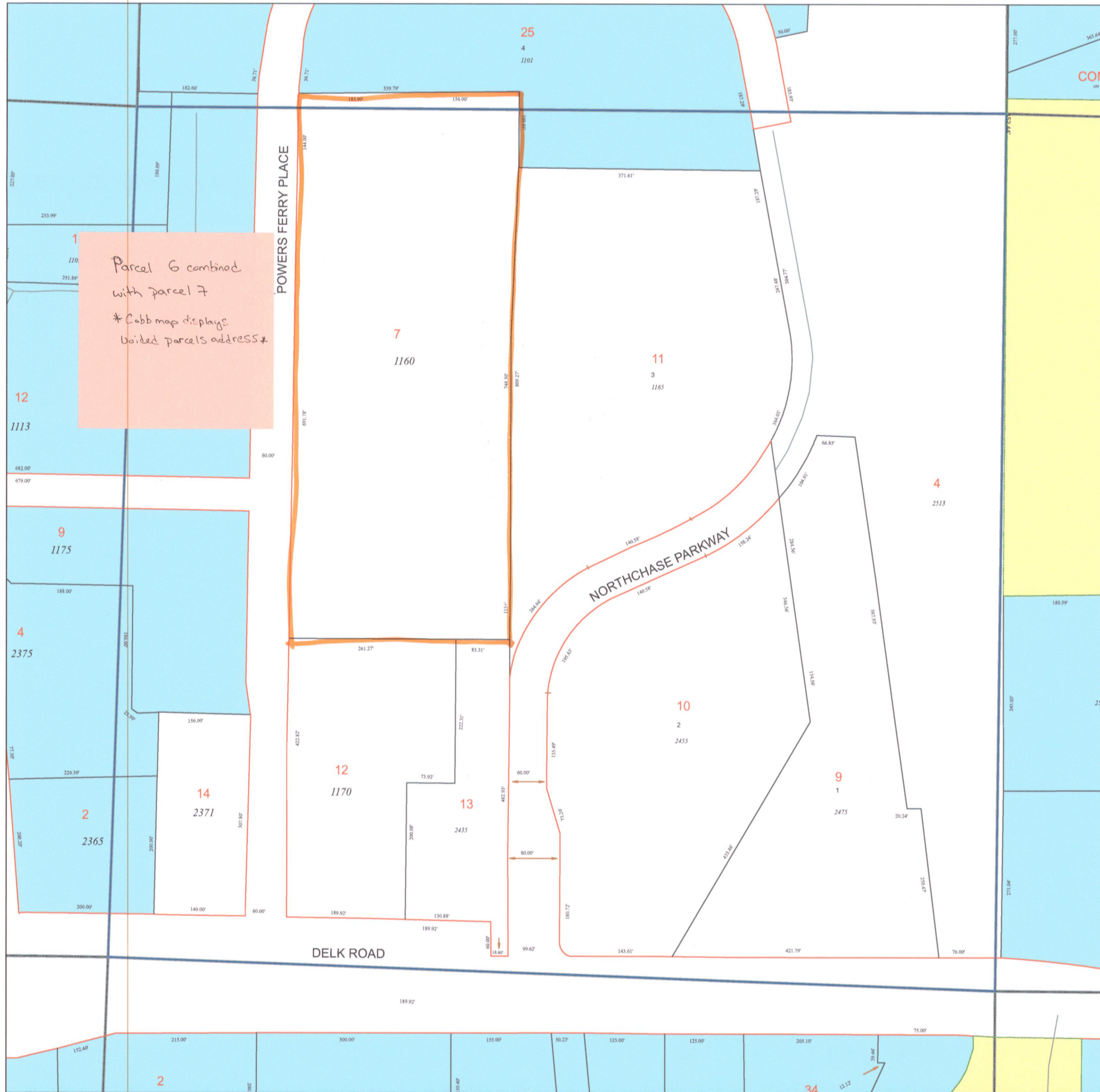


TAX MAP

17-0798

Plot Date: March 2, 2007



Parcel 6 combined
with parcel 7
*Cobb map displays
voided parcels address*

Legend

	Parcel Lines		Parcels Inside Landlot
	Creek Parcel Lines		Parcels Outside Landlot
	City Limit Lines		Cobb County Parcels
	ROW Lines		Unidentified Parcels
	School Tax Exempt		

Reference Area:

17-0788	17-0797	17-0859
17-0787	17-0798	17-0858
17-0786	17-0799	17-0857



1 = 100 Feet



DISCLAIMER NOTE: This map is prepared for the inventory of real property found within this jurisdiction and is compiled from aerial photography, recorded deeds, plats, and other imagery, data and public records. Users of this map are hereby notified that the aforementioned primary public information sources should be consulted for verification of the information contained on this map. This jurisdiction, and the mapping companies involved in preparing it, assume no legal responsibilities for the information contained on this map.

Coordinate System based on Georgia State Plane System.
West Zone - NAD83



GIS Department
205 Lawrence Street - Marietta, Georgia 30060
www.mariettaga.gov