

TAX MAP 17-0798

Plot Date: August 22, 2006

Legend	
	Parcel Lines
	Creek Parcel Lines
	City Limit Lines
	ROW Lines
	School Tax Exempt
	Parcels Inside Landlot
	Parcels Outside Landlot
	Cobb County Parcels
	Unidentified Parcels

Reference Area:

17-0788	17-0797	17-0859
17-0787	17-0798	17-0858
17-0786	17-0799	17-0857



1 = 100 Feet

DISCLAIMER NOTE: This map is prepared for the inventory of real property found within this jurisdiction and is compiled from aerial photography, recorded deeds, plats, and other imagery, data and public records. Users of this map are hereby notified that the aforementioned primary public information sources should be consulted for verification of the information contained on this map. This jurisdiction, and the mapping companies involved in preparing it, assume no legal responsibilities for the information contained on this map.

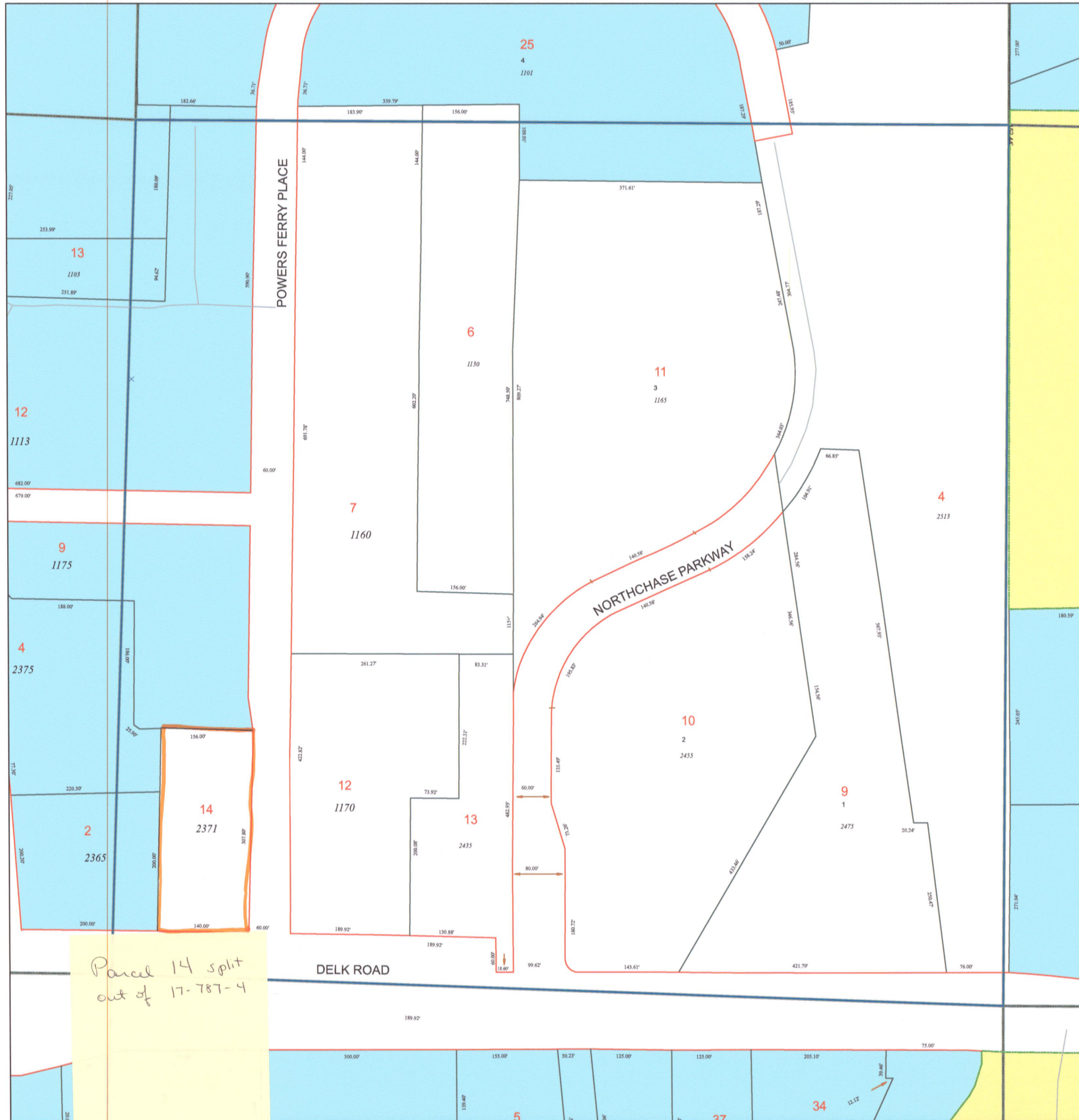
Coordinate System based on Georgia State Plane System.
West Zone - NAD83



GIS Department

205 Lawrence Street - Marietta, Georgia 30060

www.marietta.gov



Parcel 14 split out of 17-787-4