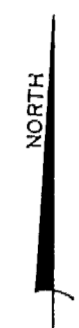
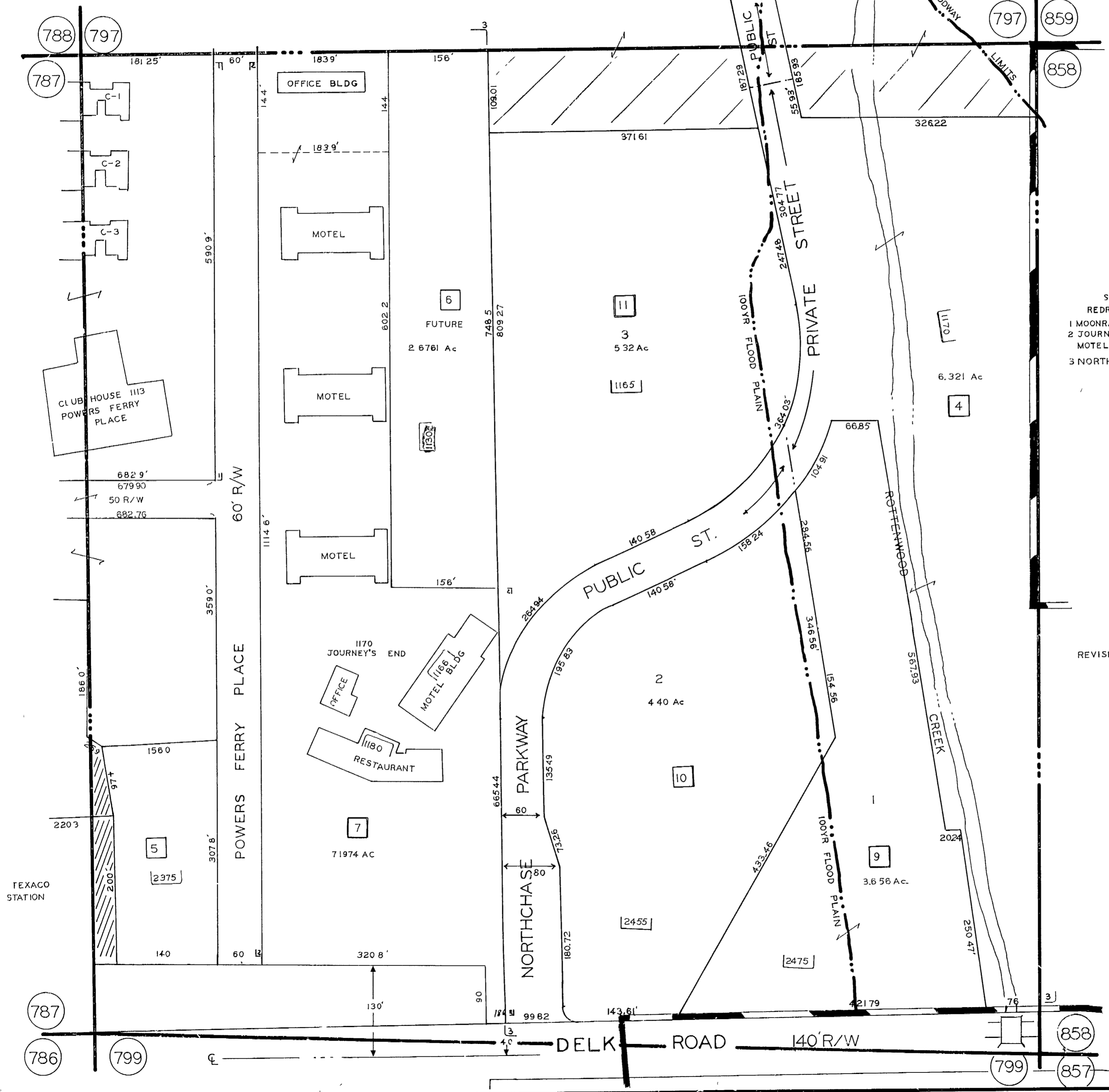


# L.L. 798 -17TH. DIST.



SCALE 1"=100'  
 REDRAWN 9-21-78  
 1 MOONRAKER APTS  
 2 JOURNEYS END  
 MOTEL & RESTAURANT  
 3 NORTHCHSE OFFICE PARK

REVISED 6-13-65  
 2-17-86  
 7-2-86  
 8-8-90