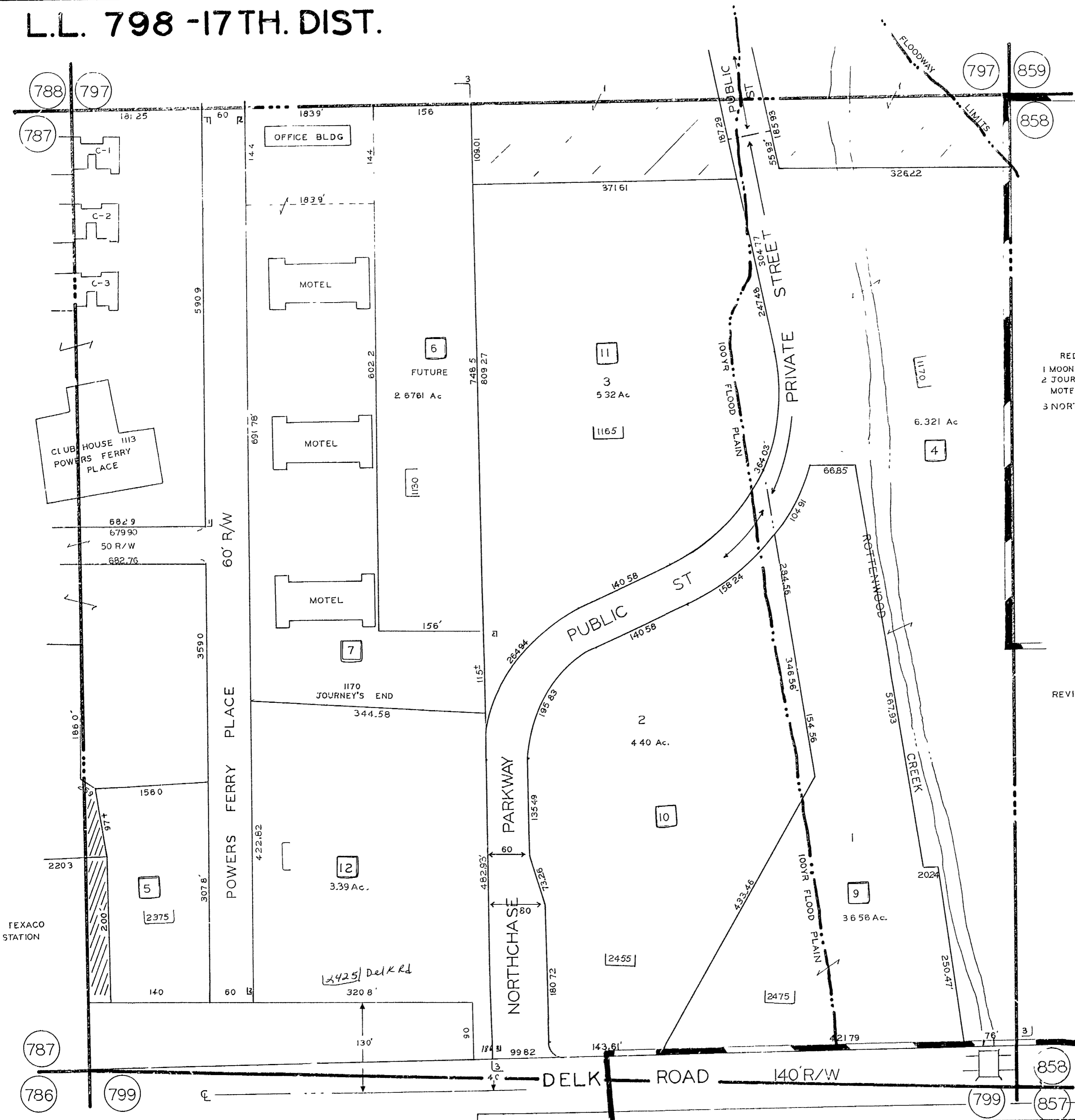


# L.L. 798 -17TH. DIST.



SCALE 1"=100'  
 REDRAWN 9-21-78  
 1 MOONRAKER APTS  
 2 JOURNEY'S END  
 MOTEL & RESTAURANT  
 3 NORTHCHSE OFFICE PARK

REVISED 6-13-85  
 2-17-86  
 7-2-86  
 8-8-90  
 5-23-95

788 797

787

787

786

797

799

797

859

858

799

857

