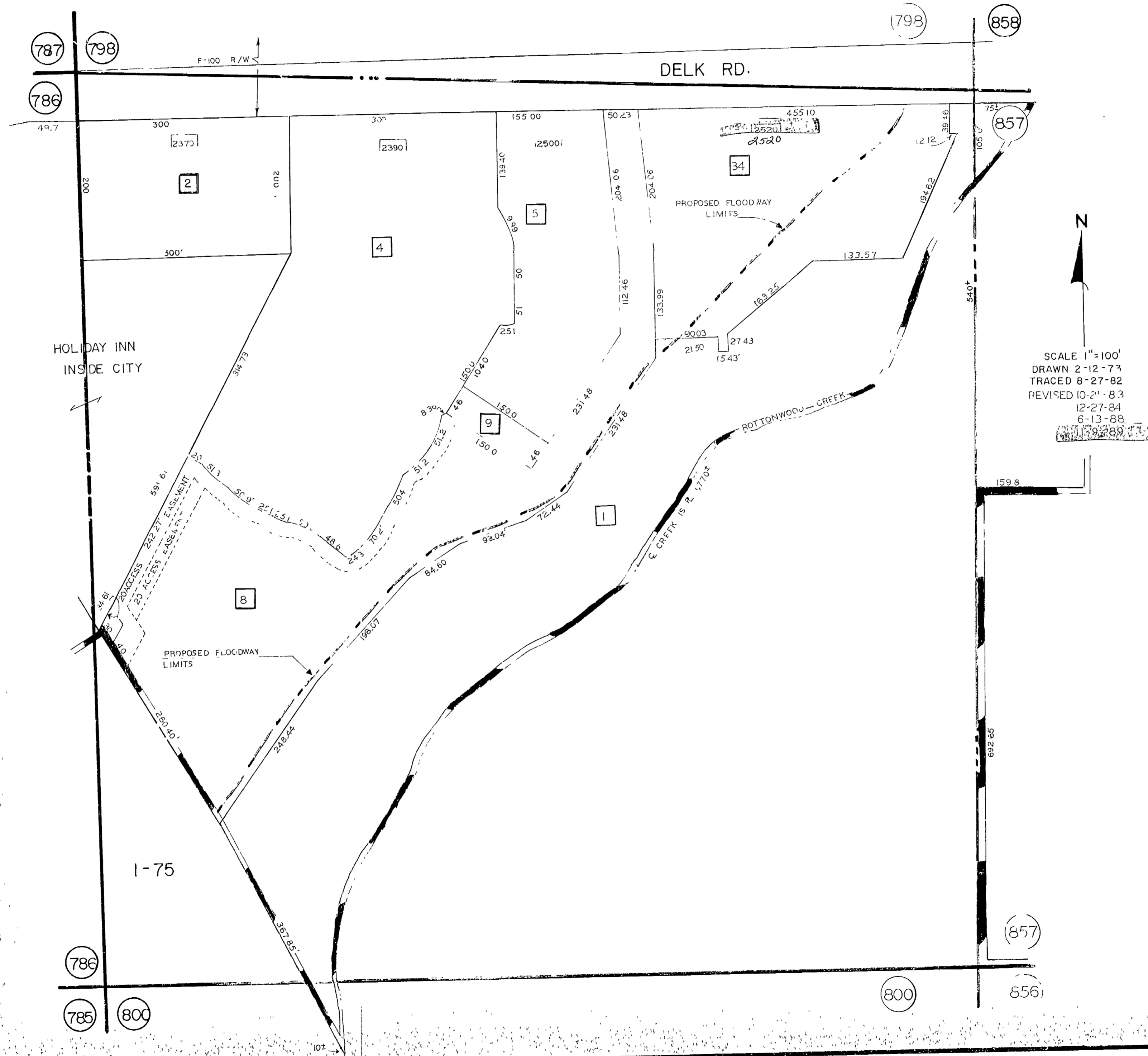


L.L. 799-17TH



HOLIDAY INN
INSIDE CITY

DELK RD.

ROTINWOOD CREEK



SCALE 1" = 100'
DRAWN 2-12-73
TRACED 8-27-82
REVISED 10-21-83
12-27-84
6-13-88
1-19-89

1-75

786

785

800

800

857

856

798

858

787

799

786

857

F-100 R/W

PROPOSED FLOODWAY
LIMITS

PROPOSED FLOODWAY
LIMITS

2370

2390

455 10
2520

2

4

34

5

9

1

8

49.7

300

300'

300'

591.61

242.27

260.40'

248.44

367.85

10±

300

200

300'

300'

591.61

242.27

260.40'

248.44

367.85

10±

300

200

300'

300'

591.61

242.27

260.40'

248.44

367.85

10±

300

200

300'

300'

591.61

242.27

260.40'

248.44

367.85

10±

300

200

300'

300'

591.61

242.27

260.40'

248.44

367.85

10±

300

200

300'

300'

591.61

242.27

260.40'

248.44

367.85

10±

300

200

300'

300'

591.61

242.27

260.40'

248.44

367.85

10±

300

200

300'

300'

591.61

242.27

260.40'

248.44

367.85

10±

300

200

300'

300'

591.61

242.27

260.40'

248.44

367.85

10±

300

200

300'

300'

591.61

242.27

260.40'

248.44

367.85

10±

300

200

300'

300'

591.61

242.27

260.40'

248.44

367.85

10±

300

200

300'

300'

591.61

242.27

260.40'

248.44

367.85

10±

300

200

300'

300'

591.61

242.27

260.40'

248.44

367.85

10±

300

200

300'

300'

591.61

242.27

260.40'

248.44

367.85

10±

300

200

300'

300'

591.61

242.27

260.40'

248.44

367.85

10±

300

200

300'

300'

591.61

242.27

260.40'

248.44

367.85

10±

300

200

300'

300'

591.61

242.27

260.40'

248.44

367.85

10±

300

200

300'

300'

591.61

242.27

260.40'

248.44

367.85

10±

300

200

300'

300'

591.61

242.27

260.40'

248.44

367.85

10±

300

200

300'

300'

591.61

242.27

260.40'

248.44

367.85

10±

300

200

300'

300'

591.61

242.27

260.40'

248.44

367.85

10±

300

200

300'

300'

591.61

242.27

260.40'

248.44

367.85

10±

300

200

300'

300'

591.61

242.27

260.40'

248.44

367.85

10±

300

200

300'

300'

591.61

242.27

260.40'

248.44

367.85

10±

300

200

300'

300'

591.61

242.27

260.40'

248.44

367.85

10±

300

200

300'

300'

591.61

242.27

260.40'

248.44

367.85

10±

300

200

300'

300'

591.61

242.27

260.40'

248.44

367.85

10±

300

200

300'

300'

591.61

242.27

260.40'

248.44

367.85

10±

300

200

300'

300'

591.61

242.27

260.40'