








# TAX MAP 20-0282

Plot Date: Oct 10, 2005

### Legend

-  Parcel Lines
-  Creek Parcel Lines
-  City Limit Lines
-  ROW Lines
-  School Tax Exempt
-  Unidentified Parcels
-  Parcels Inside Landlot
-  25 Parcel
-  15 Lot
-  1530 Address
-  Parcels Outside Landlot
-  Cobb County Parcels

### Reference Area:

20-0252	20-0251	20-0250
20-0281	20-0282	20-0283
	20-0289	20-0288



200  
Feet

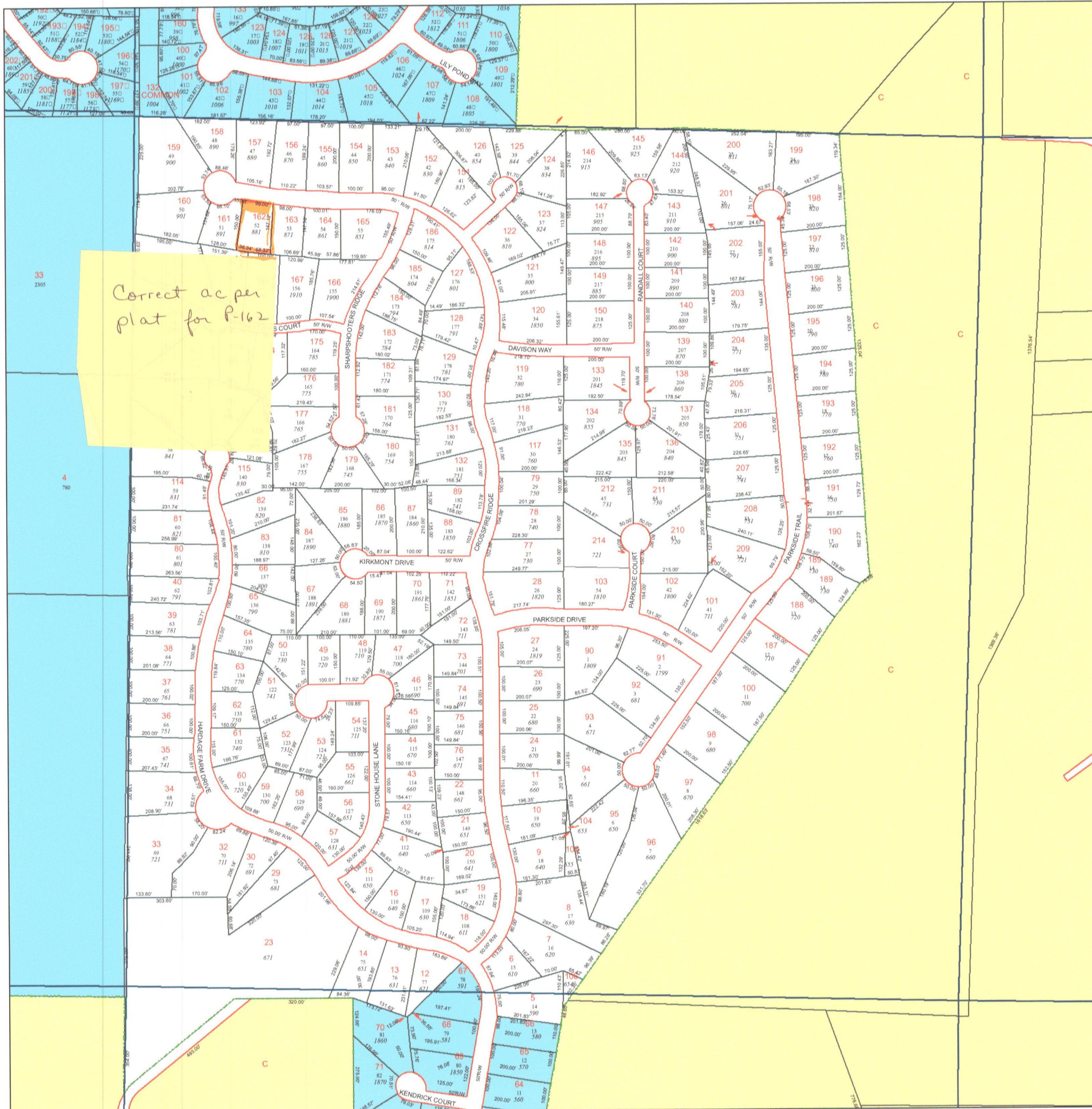
**DISCLAIMER NOTE:** This map is prepared for the inventory of real property found within this jurisdiction and is compiled from aerial photography, recorded deeds, plats, and other imagery, data and public records. Users of this map are hereby notified that the aforementioned primary public information sources should be consulted for verification of the information contained on this map. This jurisdiction, and the mapping companies involved in preparing it, assume no legal responsibilities for the information contained on this map.

Coordinate System based on Georgia State Plane System.  
West Zone - NAD83



GIS Department  
205 Lawrence Street - Marietta, Georgia 30060

[www.mariettaga.gov](http://www.mariettaga.gov)



Correct as per  
plat for P-162